



## PROFESSIONAL LEARNING GUIDE

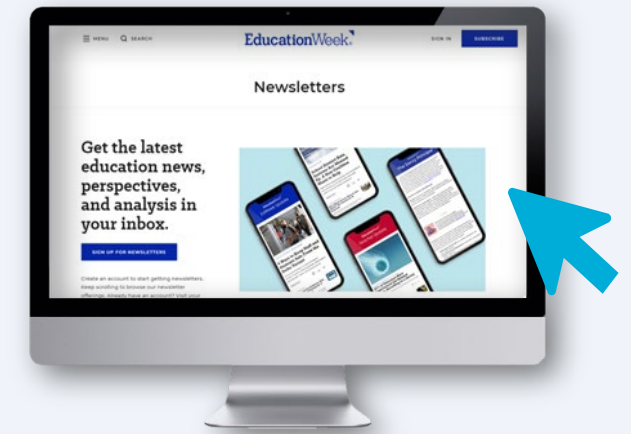
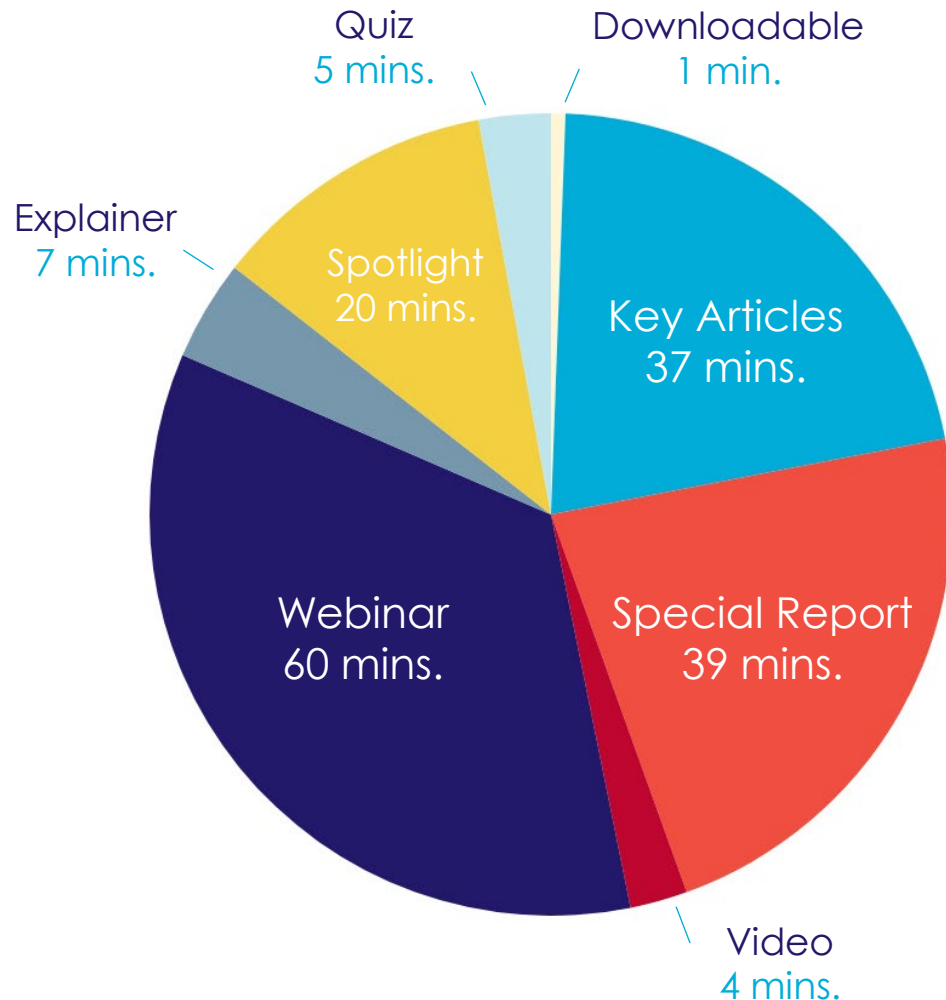


# Special Education

Building Skills for Inclusive Classrooms

# Special Education

## Approximately 3 Hours of Learning



### THE EXTRAS

Sign into [My Account](#) and take advantage of these features:

- + Bookmark and return to your favorite articles, webinars, spotlights, and more
- + Manage your [Newsletter Page](#) and get the latest articles delivered straight to your inbox

**EdWeek for Districts offers relevant, up-to-date content available when you need it, from any device.**



# Table of Contents

## Special Education

### Reading

- + **Key Articles** [SLIDE 4](#)
- + **Special Report** Understanding Learning Differences [SLIDE 5](#)
- + **Spotlight** on the Science of Reading for Students with Disabilities [SLIDE 6](#)
- + **Explainer** A Guide to Special Education Terms [SLIDE 7](#)
- + **Downloadable** Does Your School Use These 10 Dimensions of Student Belonging? [SLIDE 11](#)

### Viewing

- + **Webinar** Special Education: Proven Interventions for Academic Success [SLIDE 8](#)
- + **Video** Creating a Space for Students With Autism to Succeed [SLIDE 9](#)

### Interactive

- + **Quiz** How Does Universal Screening for Dyslexia in Schools Work? [SLIDE 10](#)



# Key Articles

## Keep Your District Up-to-Date

- + [5 Tips to Help Students With Disabilities Feel Like They Belong](#) (4 mins.)
- + [Dyscalculia and Dyslexia: Reading Disabilities Offer Insights for Math Support](#) (8 mins.)
- + [Using Technology for Students in Special Education: What the Feds Want Schools to Know](#) (4 mins.)
- + [Disability or 'Superpower'? The Push to Change Mindsets About Students With Learning Differences](#) (5 mins.)
- + [What We Know About Multi-Tiered Systems of Supports \(MTSS\), in Charts](#) (5 mins.)
- + [Braille and Language Development: What Teachers Should Know](#) (4 mins.)
- + ['Better Defined by Their Strengths': 5 Ways to Support Students With Learning Differences](#) (3 mins.)
- + [6 Rules for Engaging Students With Intellectual Disabilities in Sports](#) (3 mins.)
- + [Photo | A Day in the Life of a School Designed to Support Students With Dyslexia](#) (1 min.)



# Special Report

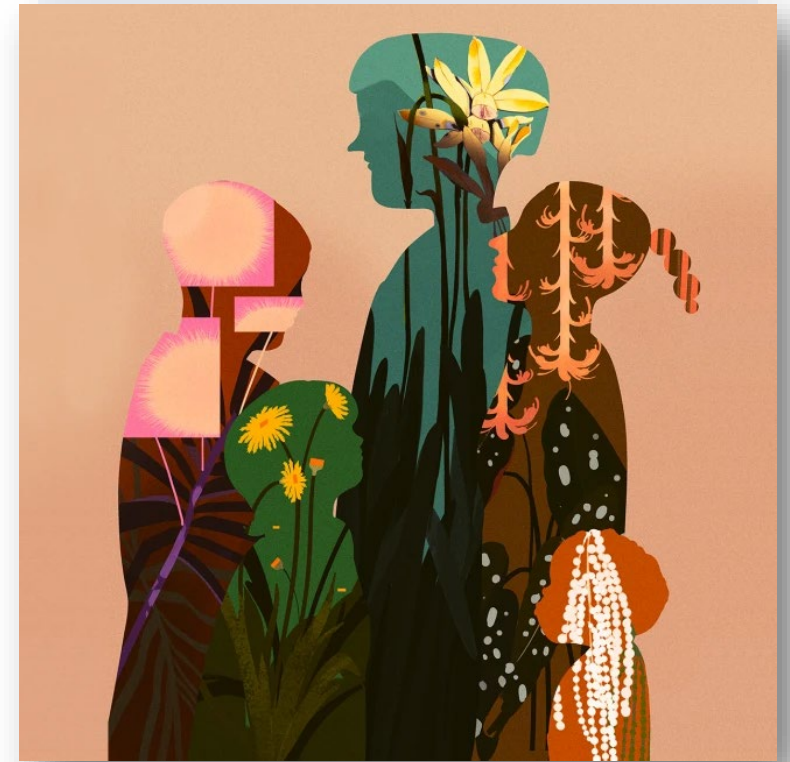
## Understanding Learning Differences

Explore our special report on learning differences and neurodiversity to **bridge the gap in understanding the unique challenges faced by students.**

This essential resource **highlights critical issues** and **provides practical solutions** for educators striving to create **inclusive and effective learning environments.** Equip yourself with the knowledge to make a difference!

**Start Reading:**

+ [Access Now](#)



### BY THE NUMBERS



- + **39-minute** read time
- + EdWeek offers a variety of [special reports](#) that cover a wide range of topics. These reports give teachers, faculty, and parents the tools they need to teach and learn.

# Spotlight

## Science of Reading for Students with Disabilities

This insightful compilation of articles delves into effective strategies for **supporting students with dyslexia**, examines the **benefits of the Orton-Gillingham method** for reading instruction, and highlights **the role of morphology** in enhancing students' vocabularies.

Discover how to effectively prepare educators to implement the science of reading in ways that **uplift students with learning differences**.

**Start Reading:**

+ [Access Now](#)



### BY THE NUMBERS



- + **20-minute** read time
- + **Spotlights** are downloadable PDFs on a range of education issues such as assessment, PD, curriculum, ESSA, growth mindset, and more.

# Explainer

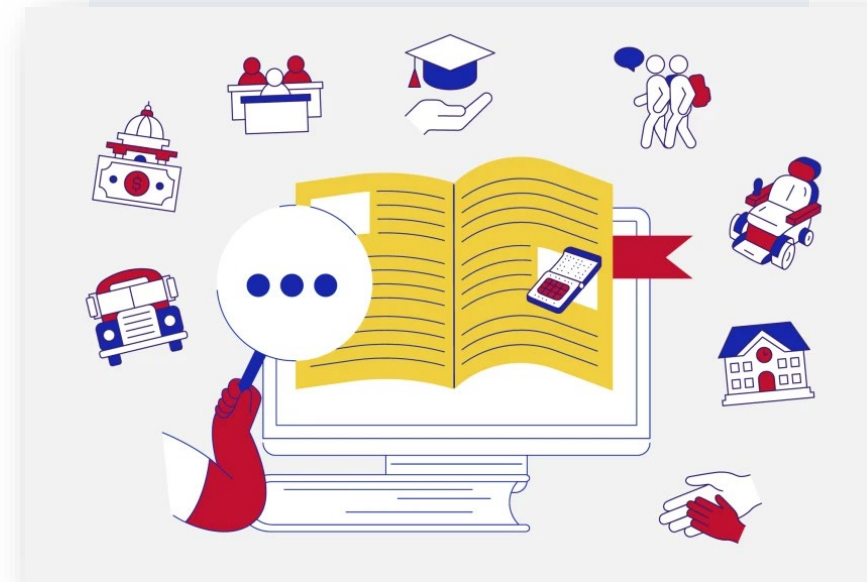
## A Guide to Special Education Terms

The number of students in special education has increased steadily over the **last four decades**.

This resource provides an overview of some of the **common terms** used in the field, **offering clarity on essential concepts** that shape our understanding of diverse learning needs. Explore key definitions that **enhance your knowledge of inclusive education, individualized support, and the various disabilities that affect student learning**.

**Start Reading:**

+ [Access Now](#)



BY THE NUMBERS



+ **7-minute** read time

+ Go deeper on the latest education issues with research-based [explainers](#).

# Webinar

## Special Education: Proven Interventions for Academic Success

Special education should be a launchpad, not a label. This webinar explores how schools can better support **ALL** students.

Join “A Seat at the Table” with moderator Peter DeWitt and guests as they discuss what schools can do to **better engage students** who require special education support and how to prevent the overidentification of students who don't.

**Start Watching:**

+ [Access Now](#)



### BY THE NUMBERS



- + **1-hour** watch time
- + EdWeek provides a robust library of upcoming and on-demand [webinars](#).



# Video

## Creating a Space for Students With Autism to Succeed

In this video, educators at a camp for **students with autism** offer advice for teachers looking to support this population of students.

Here's a look at how they support these campers, and **tips for teachers** looking to similarly support students on the spectrum.

**Start Watching:**

+ [Access Now](#)



BY THE NUMBERS



- + **4-minute** watch time
- + EdWeek has a **full team** dedicated to interactive visuals, photos, and videos. They highlight critical conversations and topics important to your district. Find all the latest in our [Multimedia Section](#).

# Quiz

## How Does Universal Screening for Dyslexia in Schools Work?

How many students are estimated to have dyslexia or other language-based disorders? How does **universal screening for dyslexia** in schools work?

Take our quiz to gauge your knowledge of this **language processing disorder**—and find links to further reading!

**Take the Quiz:**

+ [Access Now](#)



### BY THE NUMBERS



- + **5-minute** completion time
- + Test your knowledge on hot topics in education! See EdWeek's extensive [Quiz Collection](#).

# Downloadable

## Does Your School Use These 10 Dimensions of Student Belonging?

Creating a school community where students with disabilities feel a true sense of **belonging and connectedness** takes time and intentionality.

The **10 dimensions of belonging** are a list of principles designed to help schools move from inclusion of students with disabilities in classrooms to true belonging.

**Start Reading:**

+ [Access Now](#)



BY THE NUMBERS



- + **1-minute** read time
- + A collection of resources you can download, print, share or read offline: [downloads](#).

# Our Expertise in K-12 Spans Across All Topic Areas

On average, the Education Week newsroom and research center produces **2,100+ pieces of original content** per year.

## What this means for districts:

- + **7 new articles** every weekday
- + **94+ webinars** offering actionable guidance on key topics
- + **17 special reports** per year
- + **7 newsletters** curated for educators and leadership

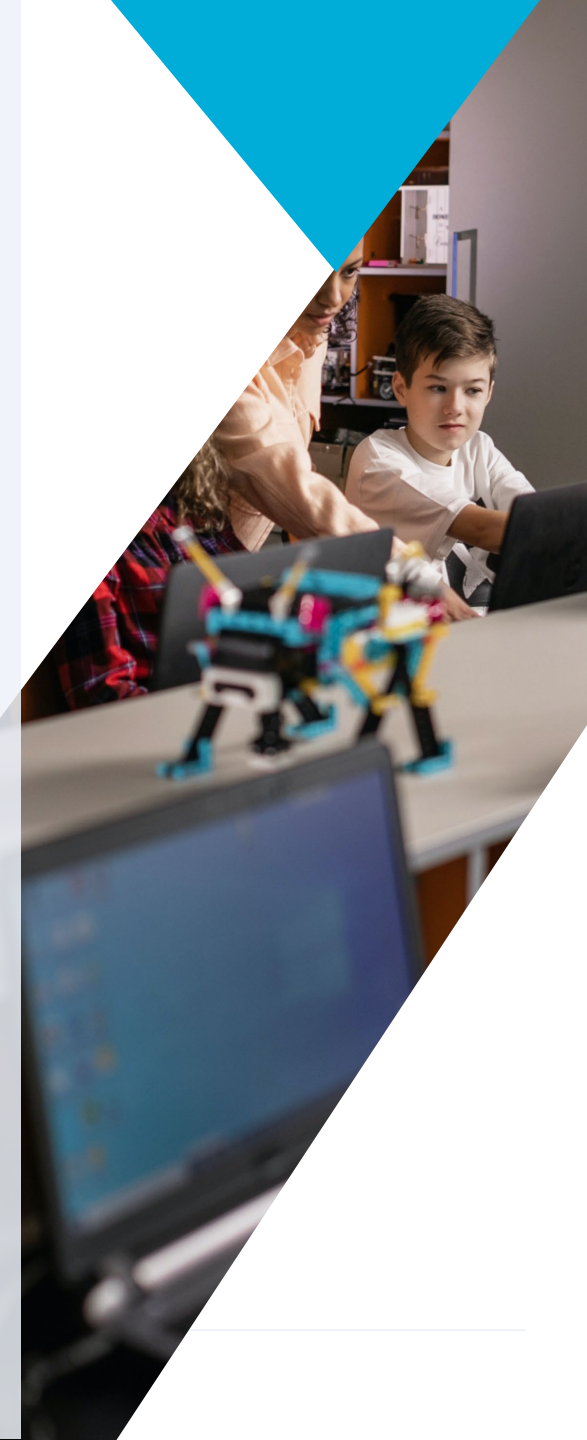
## Explore All Professional Learning Guides:

- + [Access Here](#)

## Focus Your Professional Learning on Topics That Matter:

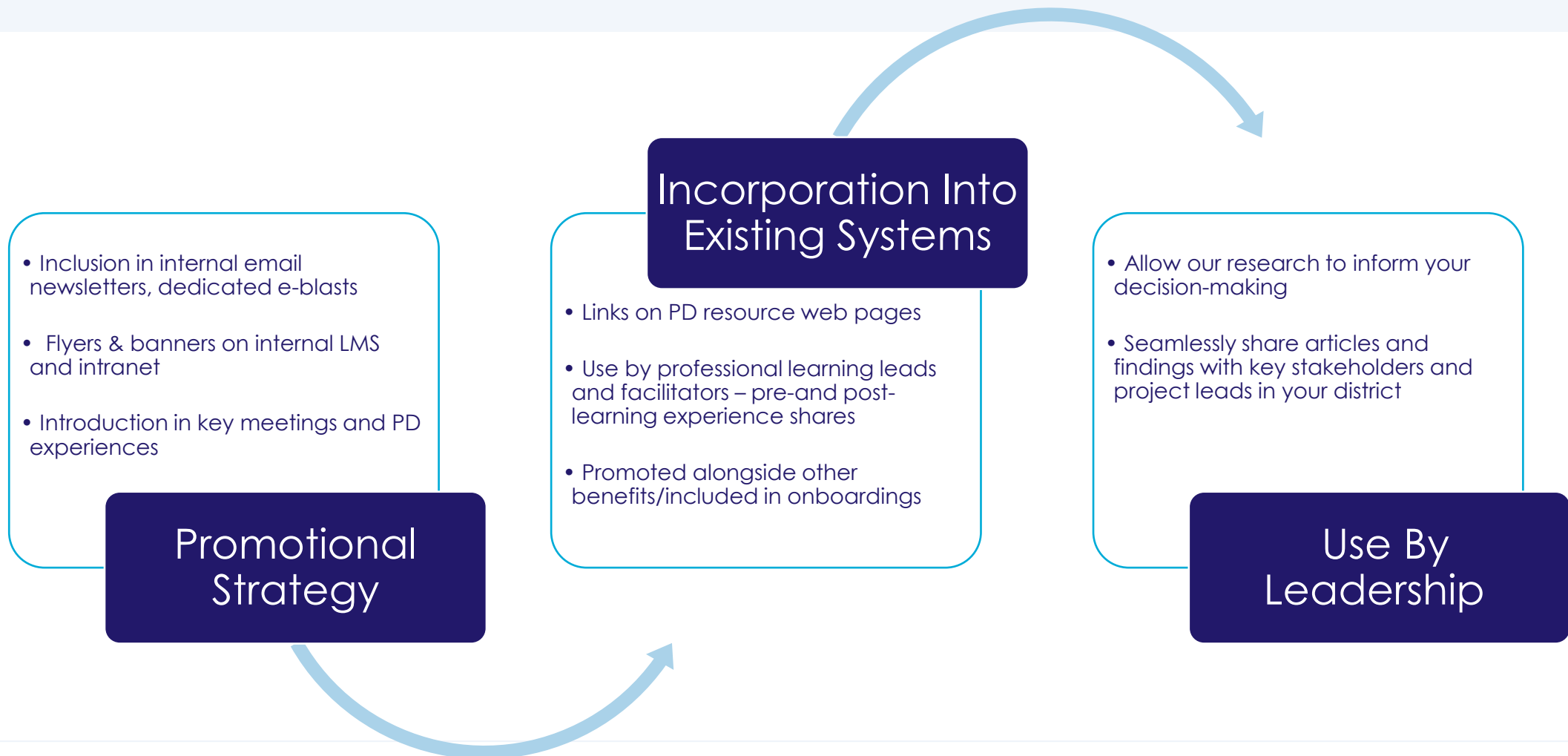
- Artificial Intelligence
- Assessment
- Budget & Finance
- Classroom Technology
- College & Workforce Readiness
- Curriculum
- Early Childhood
- Education Funding
- Emerging Technology
- Equity & Diversity
- Mathematics
- Personalized Learning
- Reading & Literacy
- School Climate & Safety
- School & District Management
- Student Achievement
- Social-Emotional Learning
- Professional Development

... and more.



# Interested in Purchasing a Group Subscription for Your District?

## 3 Keys Ways to Launch Education Week for Districts



# Thank you.

To find out how EdWeek can help your district, contact:

## Ryan Lanier

Director of Sales, Enterprise Subscriptions  
rlanier@educationweek.org | 301.280.3223

Editorial questions, contact:

## Kevin Bushweller

Assistant Managing Editor,  
Director of Editorial / Business Collaboration  
kbushweller@educationweek.org

Follow Us on Social Media:   

*Share this guide with your colleagues!*